

Mounting Options

- 1: Back mount with 24 x M20 Bolts
- 2: Bottom mount 4 x 50mm Pin
- 3: Excavator mount with Weld-On Lugs

Components

- A: Main Winch Unit
- B: Spade
- C: Excavator Mounting Frame

Hoses:

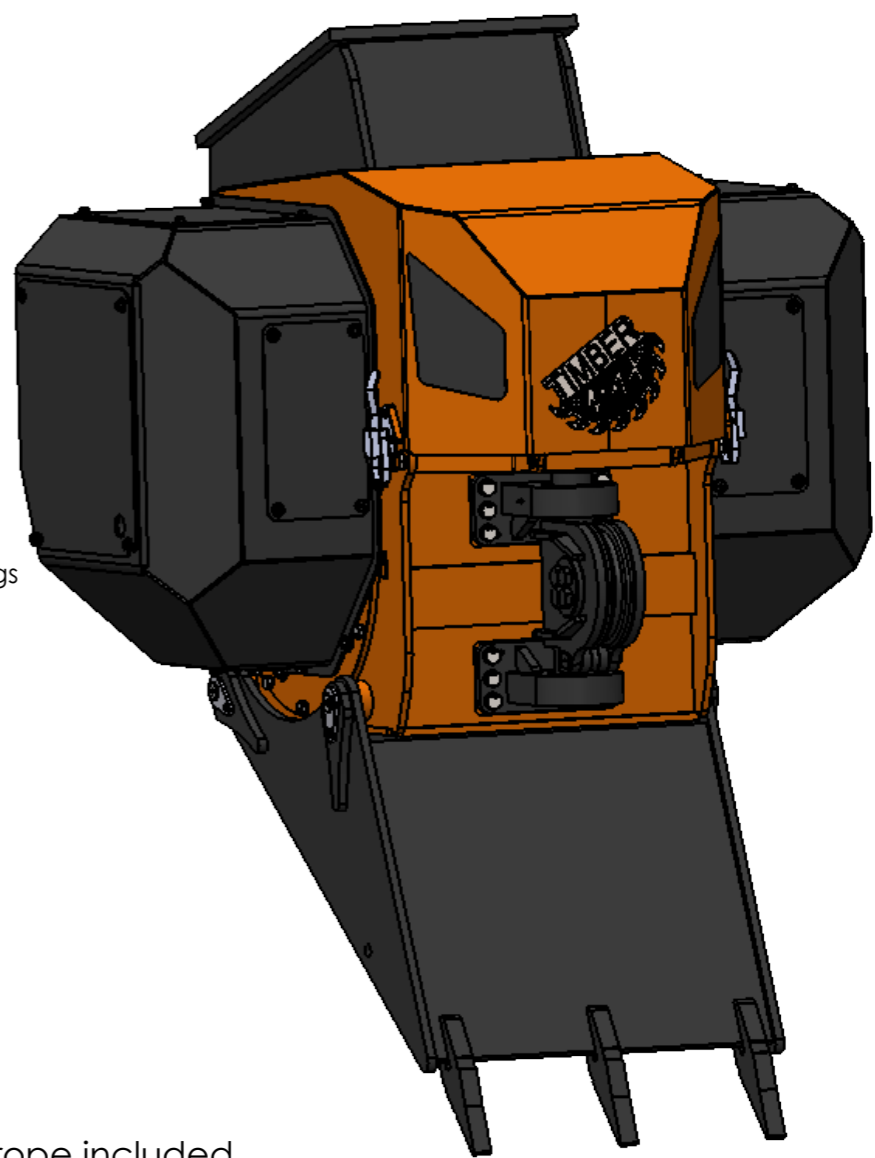
- Pressure: 1" 350 bar
- Return: 1" 150 bar
- Drain: 3/4" 50 bar

Pulling Force

- Max Theoretical Force @ 280 bar dP
- Inside Layer: 140 kN
- Outside Layer: 80 kN
- Max Constant Force Set to 80 kN through the layer detection

Weight with 340m of 16mm rope included.

- Excavator Mount: 2,500 kg
- Standard: 1,980 kg



1: Back mount 2: Bottom Mount

Les autres dimensions sont disponibles sur le fichier .dxf.
Other dimensions available on .dxf.

	$s/ = \sqrt{\text{rough}}$	$t/ = \sqrt{RZ 100}$	$v/ = \sqrt{RZ 25}$	$x/ = \sqrt{RZ 6,3}$	General Surface finish \checkmark Trimmed Edge
	Holes position / position des perçage Tol. $\pm 0,2$ Milled surface / Surface usinée Tol. $\pm 0,2$				Dimensions en mm Dimensions in mm
Variations on dimensions without tolerance values are according to <i>DIN ISO 2768-mk</i> . / La variation sur les dimensions non-tolérancées correspond à ceux décrite dans la norme <i>DIN ISO 2768-mk</i> .					
	InovForesT 2175 Boulevard Témiscamingue Rouyn-Noranda (Québec) J9Y 1K6 Canada			Matériau / Material Matériel Brut / Rough Material	Échelle / Scale 1:20 Feuille / Sheet 1 of 1
				Masse (kg) / Weight See Note	Format B
Description TimberMAX T8 Traction Winch					
				No. de pièce / Part no. T710001	
				No. de série / Serial no. T8.201	
				No. de dessin / Drawing no. 20210812 - TimberMAX_T8_Spec_Sheet	
				Product type Timbermax T8	
Vers. Description		Date Nom / Name		Urspr. Version 1	